



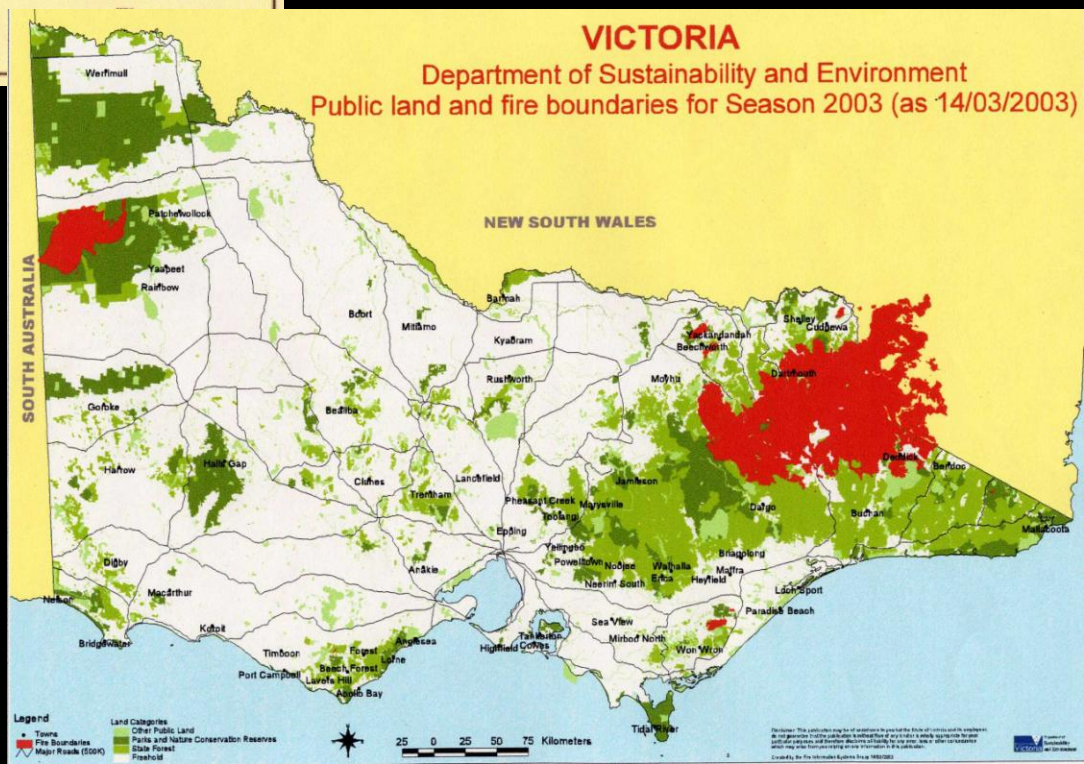
North east Victorian Bushfires: Wildlife Victoria response

Peter Myroniuk & Judith Tomlin
Wildlife Victoria

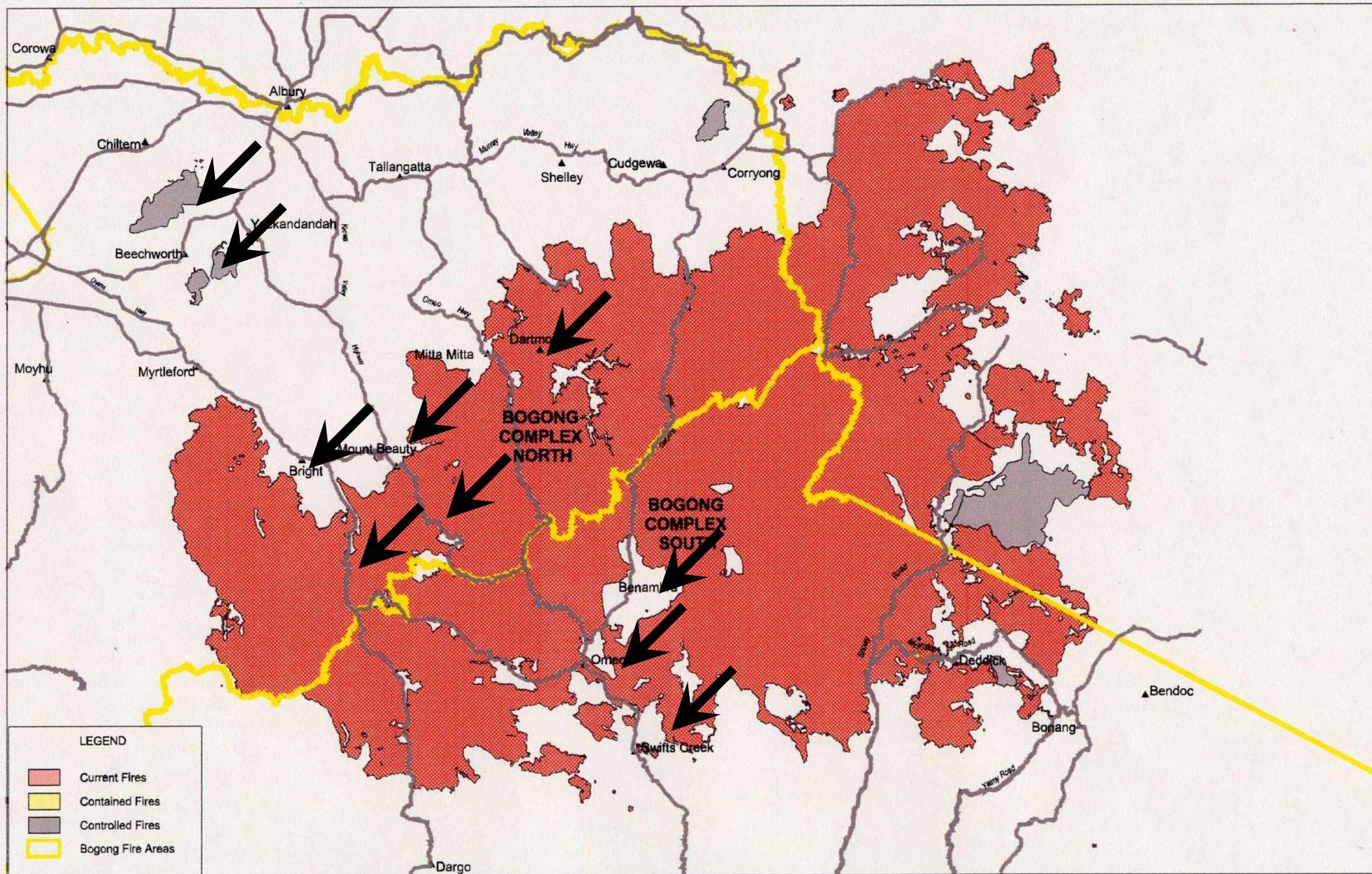


1939

2003



Fire Overview Map Produced 1700 07 MARCH 2003



An aerial photograph taken from a high altitude, likely from a firefighting aircraft. The view shows a vast landscape with a large fire burning in a valley. Thick, white smoke rises from the fire, drifting towards the left side of the frame. The ground below is a patchwork of brown and green fields, with some roads and small settlements visible. In the foreground, the top of the aircraft's fuselage is visible, showing the wing and tail section. The sky is clear and blue.

Beechworth

Eldorado fire



Mt Buffalo



Harrietville 9am



Harrietville



WILDLIFE VICTORIA'S RESPONSE

- **Contacted wildlife shelters in areas affected**
- **Contacted volunteers , allocated jobs & established rosters**
- **Checked equipment**
- **Liaised with authorities**
- **Determined strategic base camp & set up camp**
- **Media - press release**
- **Networked within local communities**
- **Conducted search & rescue operations**
- **Support food and water**
- **De brief & thank you**

BEECHWORTH BASE CAMP



FIRE SCENES



SAFETY EQUIPMENT



Swamp Wallaby



Koala



Brushtail Possum



Raven



WATER FOR WILDLIFE



Food for wildlife



CELEBRATE !



OUTCOMES

- Large area covered
- Networked within local communities & worked with land owners
- Networked with local wildlife carers
- Sustained effort
- Coordinated response
- Power of the media
- Fundraising

ISSUES

- Wildlife welfare response time frames - 2 weeks too late!
- Largely self managed. Need better communication between authorities and wildlife organisations.
- Integrated involvement in disaster response
- Access to staging areas

Staging area



ISSUES

- Health & safety, training & equipment
- Volunteer management
- Funding

Acknowledgements

Judith Tomlin, Wildlife Vic

Marilyn Blankly, Wildlife Vic

Szumai Anderson, Wildlife Vic

Sandy Fernee, Wildlife Vic

Charlie Pascoe, Parks Vic

and the volunteers